

MODEL NO: **BT5/A**

Description:
B TECH COAT

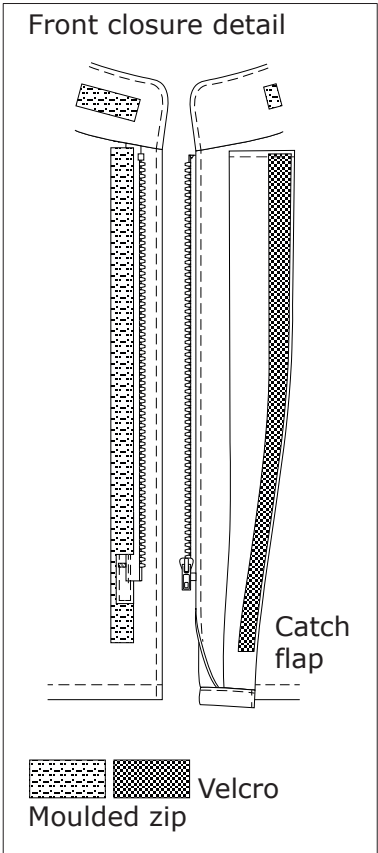
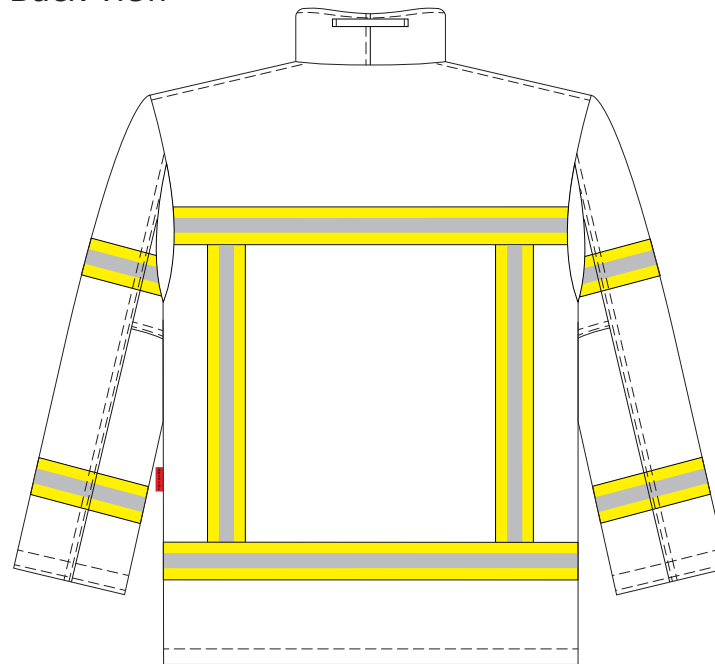
Prepared by: TE
Checked by:


DATE: 19.11.20

Front view



Back view



 Triple trim yel/sil/yel reflective

EN469:2020 Level 2

MODEL NO: BT5/A	Prepared by: TE Checked by:	Description: B TECH COAT	Date: 19.11.20
LABELS	Composite Label sealed to lower right front inside pocket (LAEC1..). Crosstech label inserted under right edge of pocket (LA5371).		
MOISTURE BARRIER	M17 Crosstech Fireblocker, tape sealed seams and sealed neck.		
THERMAL BARRIER	Q01 Quilt.		
OUTER POCKETS	2 x Welt pockets with mitred flaps (FOP31, FFL76)		
INNER POCKETS	1 x Patch pocket on lining, lower right front (FLP01) BUT smaller in size (21.5cm x 20.5cm).		
VERTICAL POCKETS			
OTHER LOOPS/ STRAPS/POCKETS	Hanger loop on under collar of outer (FLO22), centrally placed over seam.		
FRONTS	30mm velcro + moulded zip (FFC05) and catch flap lined in Neoprene.		
BADGES	BRISTOL sew in logo (EM22) inserted in left sideseam, level with pocket flap.		
CUFFS	Plain cuffs (FPC01), Cuff assembly with Neoprene anti-wicking fabric (FCU01).		
UPTURN	Neoprene/ M17 into turned up hem (FHC08)		
REFLECTIVE	50mm Triple Trim Yel/Sil/Yel (REF50YEGSYE), in position as drawing.		
SIZE SCALE	B57		
OTHER	Throat tab, gore lined 'Flip Back' (FTT07) Topstitching as (FTS10) Hind arm sleeve panels split. Underarm gussets.		

USAGE BREAKDOWN	MODEL NO: BT5/B		PREPARED BY: TE		CHECKED BY:		DATE: 19.11.20
FEATURE	CODE	BREAKDOWN/ DESCRIPTION	LOOP VELCRO		HOOK VELCRO		FABRIC/AMOUNT CUT
			CODE	LENGTH	CODE	LENGTH	
OUTER POCKETS	(2 x) FFL76 (2 x) FOP31	On flap On pocket	VLF30	(4 x) 4cm	VHF30	(4 x) 4cm	
LINING POCKETS	(1 x) FLP01	Lining pocket					Cut in lay
RADIO POCKETS							
LOOPS	(1 x) FLO22	Hanger Loop					(1 x) 12cm, 10mm Nomex Webbing
STRAPS							
FRONT CLOSURE	FFC05		VLF30	Cut by machinist	VHF30	Cut by machinist	(1 x) moulded zip (ZM01BL)
GRAPHICS	(1 x) BRISTOL	Sew in logo					(1 x) (EM22) BRISTOL
THUMBHOLE/ LOOP/ PLAIN	(2 x) FPC01	Cuffing					(2 x) 20cm Nomex Cuffing
CUFF TABS							
THROAT TABS	(1 x) FTT07	On tab On collar	VLF30	(1 x) 8cm, (1 x) 4cm	VHF30	(1 x) 4cm	
OTHER							